

Coeur d'Alene RELOCATION GUIDE



NORTH IDAHO | KOOTENAI COUNTY

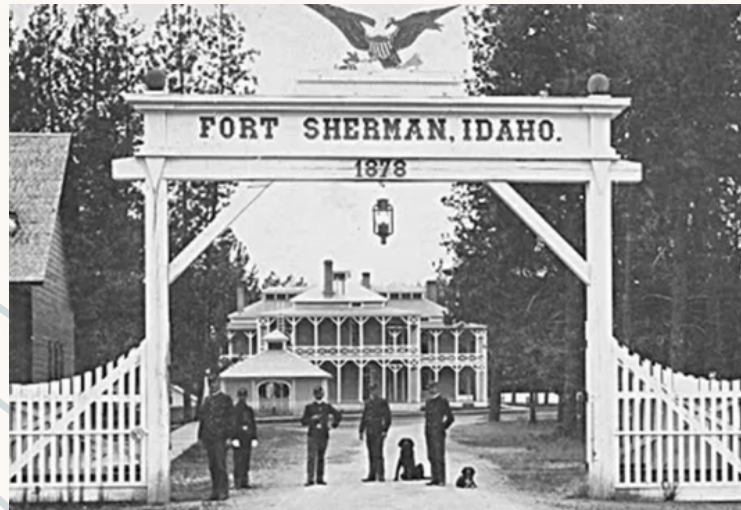


A Quick History

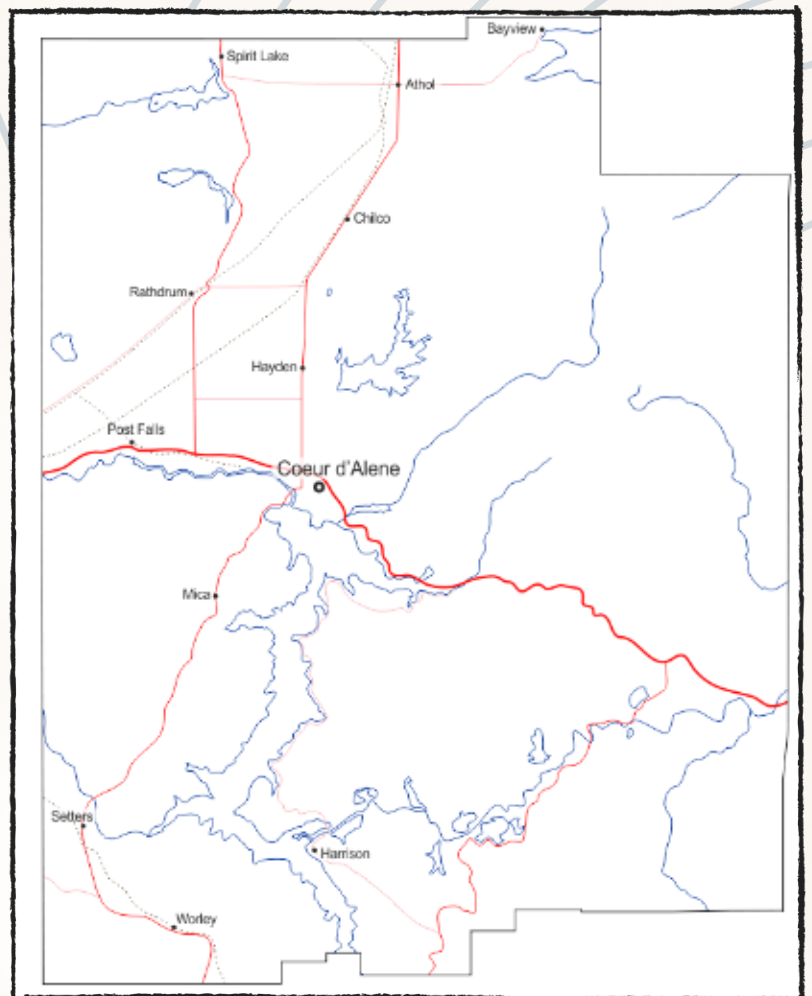
FOUNDED: 1887

POPULATION: 55,904

KOOTENAI COUNTY SEAT



During the early 1800's, the Northwest Fur Trading Company began to establish trading posts in the Inland Northwest. One of those posts was built on the northern shore of Lake Pend O'Reille. During that time, some of the French speaking traders began to use a nickname for the Schitsu'umsh people, who traded with them. In French "Coeur" means heart and "Alene" means aw, a sharp pointed tool. In other words, they were known as sharp traders with hearts like the point of an awl. In 1878, General William T. Sherman established a military fort on the northern shore of Lake Coeur d'Alene. While the fort was under construction, a small village began to develop on the eastern edge of Fort Coeur d'Alene. That was the beginning of Coeur d'Alene, the city by the Lake.



Thinking of Moving to Coeur d'Alene?

WE DON'T BLAME YOU!

This guide includes a directory of Kootenai County resources, points of interest, and some of our favorite hidden gems! A digital version of this guide is also available for download on our website. Whether you are looking to buy in the Coeur d'Alene area, invest in property, or you are interested in a recommendation for a good waterfront restaurant, we are happy that we get to be a part of your journey!

Ryan and Morgan Keller


Windermere
REAL ESTATE
WINDERMERE / COEUR D'ALENE REALTY, INC.

RyanandMorganKeller.com
208.771.3333 | 208.699.0999



If you are already working with an agent, this is not meant as a solicitation for that business.



Simple Sips



Wine House

1621 E. Sherman Avenue
Coeur d'Alene, Idaho 83814
(208) 930-1498



Daft Badger Brewing

1710 N. 2nd Street
Coeur d'Alene, Idaho 83814
(208) 665-9892



Post Falls Brewing Company

112 N. Spokane Street
Post Falls, Idaho 83854
(208) 773-7301



Stylus Wine & Vinyl Bar

2605 N. 4th Street
Coeur d'Alene, Idaho 83815
(208) 601-6602

Cork & Tap Downdraft Brewing

Fine Brewed

Iron Horse

Jeremiah Johnson Brewing

Moose Lounge

Trails End Brewery

Taphouse Unchained

Vantage Point Brewing

Vine & Olive Eatery & Wine Bar

Whispers Lounge

Bees Knees Whiskey Bar

Crown & Thistle

NYC Piano Bar

Chalice Brewing

Selkirk Abbey

Uncorked with Friends

CDA Cider

Black Lodge Brewing

Delicious Dining

Seasons Fresh Grill

Gathered

Satay Bistro

White House Grill

Belle's Brunch House

Tony's on the Lake

Cafe Carambola

Sawmill Grille

Terraza

Midtown Bluebird

Izzy's Comfort Kitchen

Anthony's

Fire Pizza

315 Cuisine

Cranberry Road Winery

Flame & Cork Pizza

Fuki Sushi

Porch Public House

Cochinito Taqueria

Jimmy's Down the Street

Moon Time

Parallel 47

The Garnet Cafe

Wolf Lodge

Michael D's Eatery

Crafted Tap House

Olympia Restaurant

Hudson's Hamburgers

El Paisa

Capones Pub & Grill

Bardenay Restaurant & Distillery

1710 W. Riverstone Drive
Coeur d'Alene, Idaho 83814
(208) 765-1540



Shiki Sushi Bar & Japanese Grill

221 E. Sherman Avenue
Coeur d'Alene, Idaho 83814
(208) 771-7988



Junior's Cocina Mexicana

313 E. Coeur d'Alene Lake Drive
Coeur d'Alene, Idaho 83814
(208) 771-7020



Vicino Pizza Neopolitan Style Pizzeria

2385 N. Old Mill Loop
Coeur d'Alene Idaho 83814
(208) 758-7997



Waterfront Views



The Boathouse Restaurant | Hayden Lake

3820 E. Hayden Lake Road
Hayden Lake, Idaho 83835
(208) 772-5057



Cedars Floating Restaurant | CDA Lake

1514 S. Marina Drive
Coeur d'Alene, Idaho 83814
(208) 664-2922



Le Peep | Spokane River

1884 W. Bellerive Lane
Coeur d'Alene, Idaho 83814
(208) 664-0404



Embers by the Lake | Hauser Lake

12008 N. Woodland Beach Drive
Hauser, Idaho 83854
(208) 981-0533

Family Fun



Silverwood Theme Park

27843 N. Highway 95
Athol, Idaho 83801
(208) 683-3400
silverwoodthemepark.com



Tree to Tree Adventure Park

17545 E. Locust Grove Road
Athol, Idaho 83801
(208) 423-8289
treetotreeidaho.com



Big Red's Barn

7397 N. Government Way
Coeur d'Alene, Idaho 83815
(208) 719-9047
bigredsbar.com



Skate Plaza

5685 N. Pioneer Drive
Coeur d'Alene Idaho 83815
(208) 772-9507

Coeur d'Alene Parasailing
KROC Community Center
Regal Cinemas

McEuen Park

Tubbs Hill

Jumping Jackalope

Museum of North Idaho

Crime Scene Entertainment

Higgins Point-Eagle Watch

Coeur D'Alene Resort

Kayak Coeur D'Alene

Triple Play Family Fun

Cat Tales Zoological Park

Blue Zoo

Manito Park

River City Lanes Bowling

Stateline Speedway

Wiley E. Waters

Silver Mountain Resort

Special Experiences



Family Canoe Trip Down North Idaho's Pack River

2 Adults x \$105.00

Total \$210.00

Ages 6-80, max of 14 per group

Duration: 4h

https://www.tripadvisor.com/Attraction_Review-g35597-d21210300-Reviews-Selkirk_Outdoor_Leadership_Education_SOL-E-Sandpoint_Idaho.html

Guided Off-Road Vehicle Tour in North Idaho Forest

2 Adults x \$400

Total \$800

Ages 16-100, max of 16 per group

Duration: 3-4h

https://www.tripadvisor.com/AttractionProductReview-g35418-d18754482-Guided_Off_Road_Vehicle_Tours_in_North_Idaho_Forests-Coeur_d_Alene_Idaho.html



Parasailing Over Lake Coeur d'Alene

Single Flight: \$110

Double Flight: \$155

Ages 4-100

Closed Saturdays

<https://cdaparasail.com/>



Special Experiences



Seaplane Tour Flight

Over Lake Pend Oreille, Sandpoint

30 Minute Flight: Starting at \$69 Per Person

45 Minute Flight: Starting at \$99 Per Person

<https://www.sandpoint.com/seaplane/>

Guided Flyfishing Trip on the St. Joe River

Half Day: \$525 1-2 People

Full Day Float: \$680 1-2 People

<https://www.rowadventurecenter.com/1-day-fishing>



Guided Rafting Trip On the Clark Fork, St. Joe, Lochsa, or Moyie River

Clark Fork: From \$120

Classic Lochsa: From \$140

Super Lochsa: From \$184

St. Joe: From \$120

Moyie: From \$135

<https://www.rowadventurecenter.com/1-day-rafting>



Local Camping

Beauty Creek Campground

<https://www.recreation.gov/camping/campgrounds/233267>

Bumblebee Campground

<https://www.recreation.gov/camping/campgrounds/233899>

Camp Coeur d'Alene

<https://campcoeurdalene.com/>

Farragut State Park

<https://parksandrecreation.idaho.gov/parks/farragut/>

Heyburn State Park

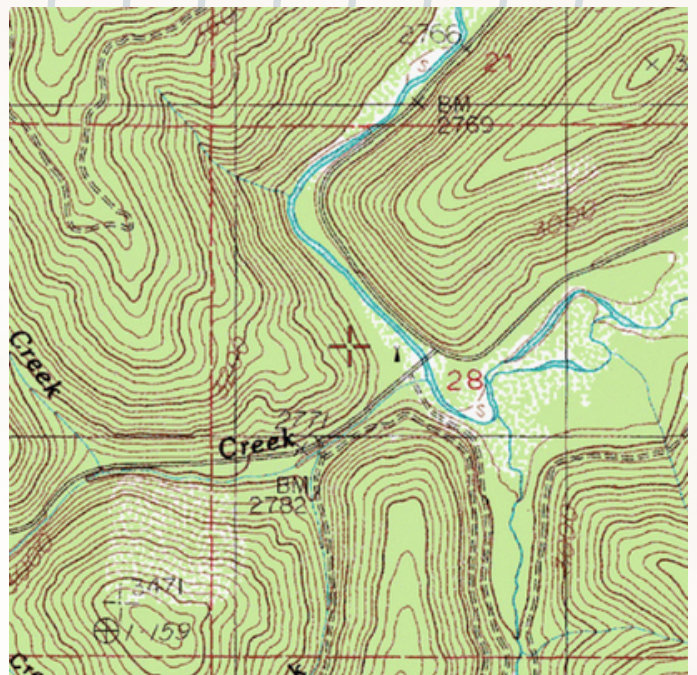
<https://parksandrecreation.idaho.gov/parks/heyburn>

Honeysuckle Campground

<https://www.fs.usda.gov/activity/ipnf/recreation/camping-cabins>

Round Lake State Park

<https://parksandrecreation.idaho.gov/parks/round-lake/>



Trails, Biking, and Hiking

Canfield Mountain
International Selkirk Loop
Steven's Creek
Tubbs Hill
Liberty Lake Trails
Mineral Ridge
Blue Creek Bay
Pulaski Tunnel Trail
Route of the Hiawatha
Trail of the Coeur d'Alenes

Old Wagon Loop
Spokane Riverside Trail
Upper Falls Loop
Black Bay Park Trail
Loon Lake Reservoir
Columbia Plateau Trail
Mickinnick Trail Head
Mount Spokane State Park
Ross Creek Cedars
Lincoln Park

The Centennial Trail is a paved trail that expands 24 miles in Idaho and another 40 miles into Washington. Some sites you can see while on this trail are Higgins Point, a popular spot for bald eagle watchers, as well as bridges and waters in Riverside State Park in Washington.



Important Information

POLICE DEPARTMENTS (911)

Coeur d'Alene Police Dept- 3818 Schreiber Way 208.769.2320

Idaho State Police Headquarters- 615 W. Wilbur Avenue 208.769.1433

Kootenai County Sheriff's Office- 5500 N. GVT Way 208.446.1300

Post Falls Police Dept- 1717 E. Polston Avenue 208.773.3517

Rathdrum Police Dept- 8178 Main Street 208.687.0711

Spirit Lake Police Dept- 6155 W. Maine Street 208.623.2701

MEDICAL FACILITIES

Kootenai Urgent Care- 700 W. Ironwood, Ste 120E 208.625.3600

Kootenai Urgent Care- 566 W. Prairie Ave, Hayden 208.625.3600

Kootenai Urgent Care- 1300 E. Mullan Ave, Post Falls 208.625.3600

Kootenai Health- 2003 Kootenai Health Way, CDA 208.625.3600

North Idaho Behavioral Health- 2003 Kootenai Health Way 208.625.3600

NW Specialty Hospital- 750 N. Syringa, Post Falls 208.262.2300

PET SERVICES

Dog Licensing (Any Veterinarian)

Coeur d'Alene Animal Control 208.769.2320

Kootenai Animal Hospital- 1704 E. Seltice Way, Post Falls 208.209.3185

Prairie Animal Hospital- 920 W. Prairie Ave. CDA 208.772.3214

Doc Holly Pet Vet- 9757 N. Rustlers Trl Ste B, Hayden 208.772.3221

VETERANS SERVICES

Veteran Affairs Medical Center- 4815 N. Assembly St, Spokane 509.434.7000

Veteran Service Office- 120 E. Railroad, Post Falls 208.446.1092

North Idaho VA Clinic- 915 W. Emma Ave., CDA 208.665.1700